



# 2017 Threats Predictions

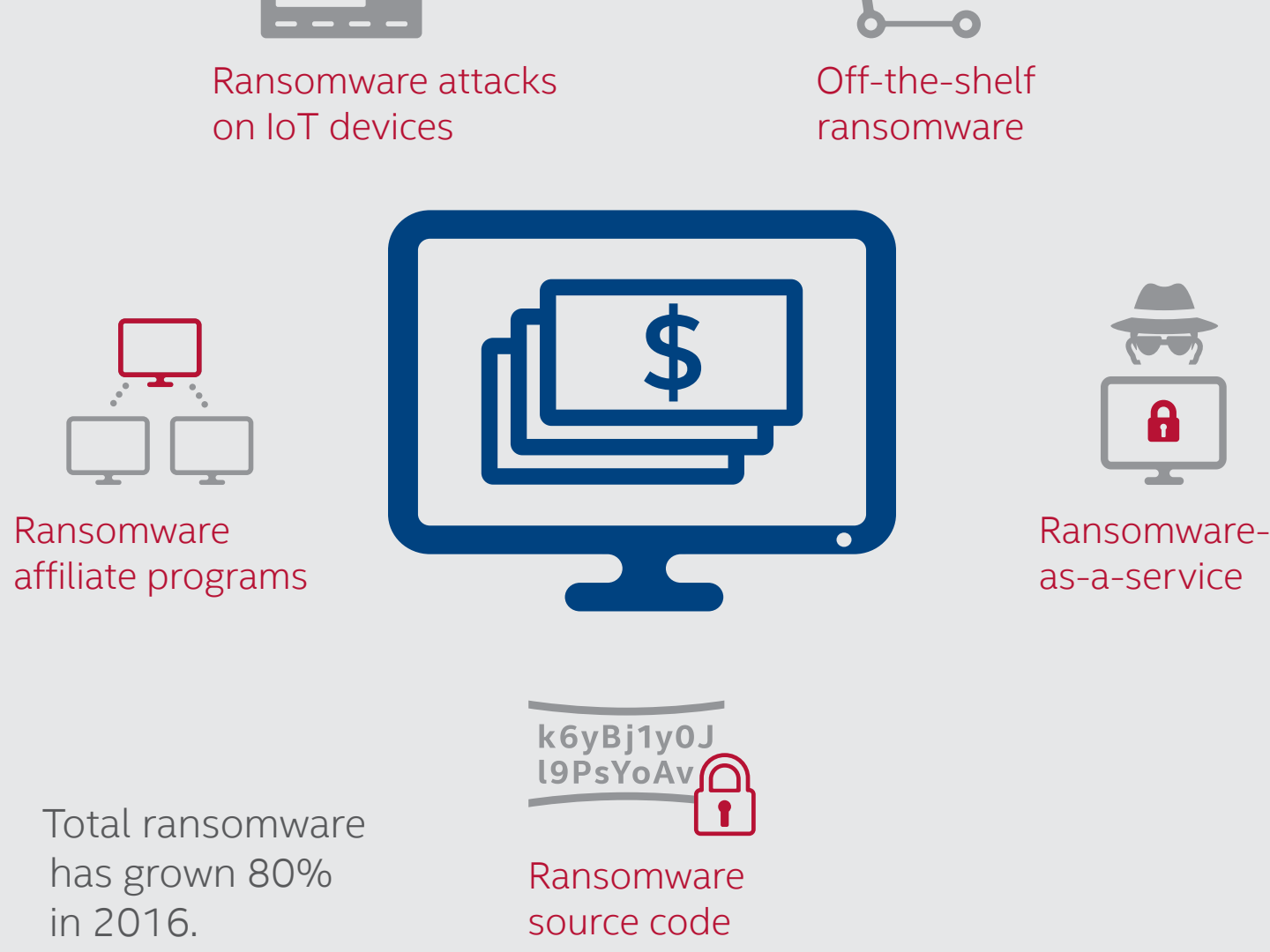
**McAfee Labs**

Intel Security shares predictions about the evolution of threats in 2017.

## Ransomware

**Ransomware will peak in the middle of next year but then begin to recede.**

Ransomware advances in 2016



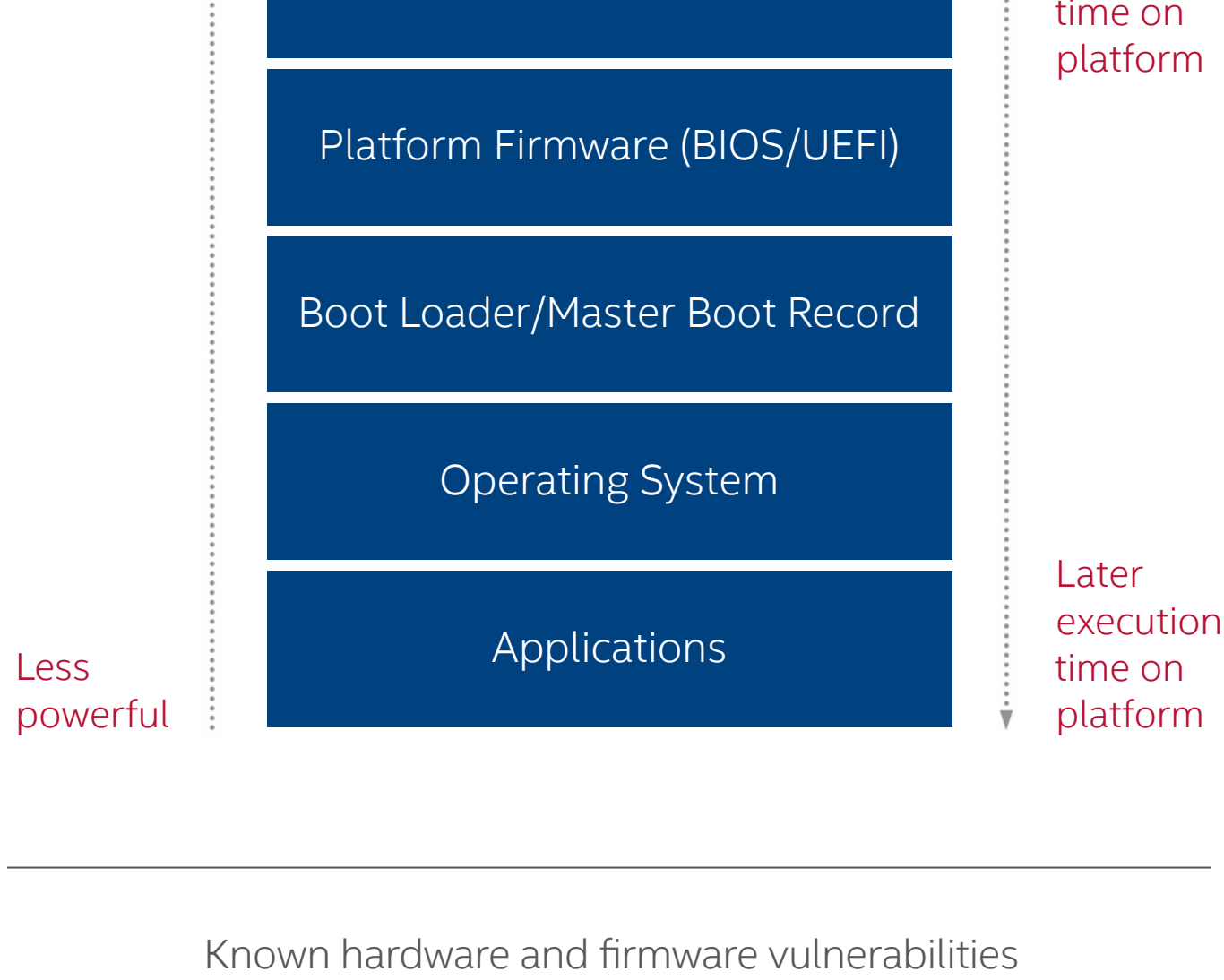
The security industry fights back to slow ransomware



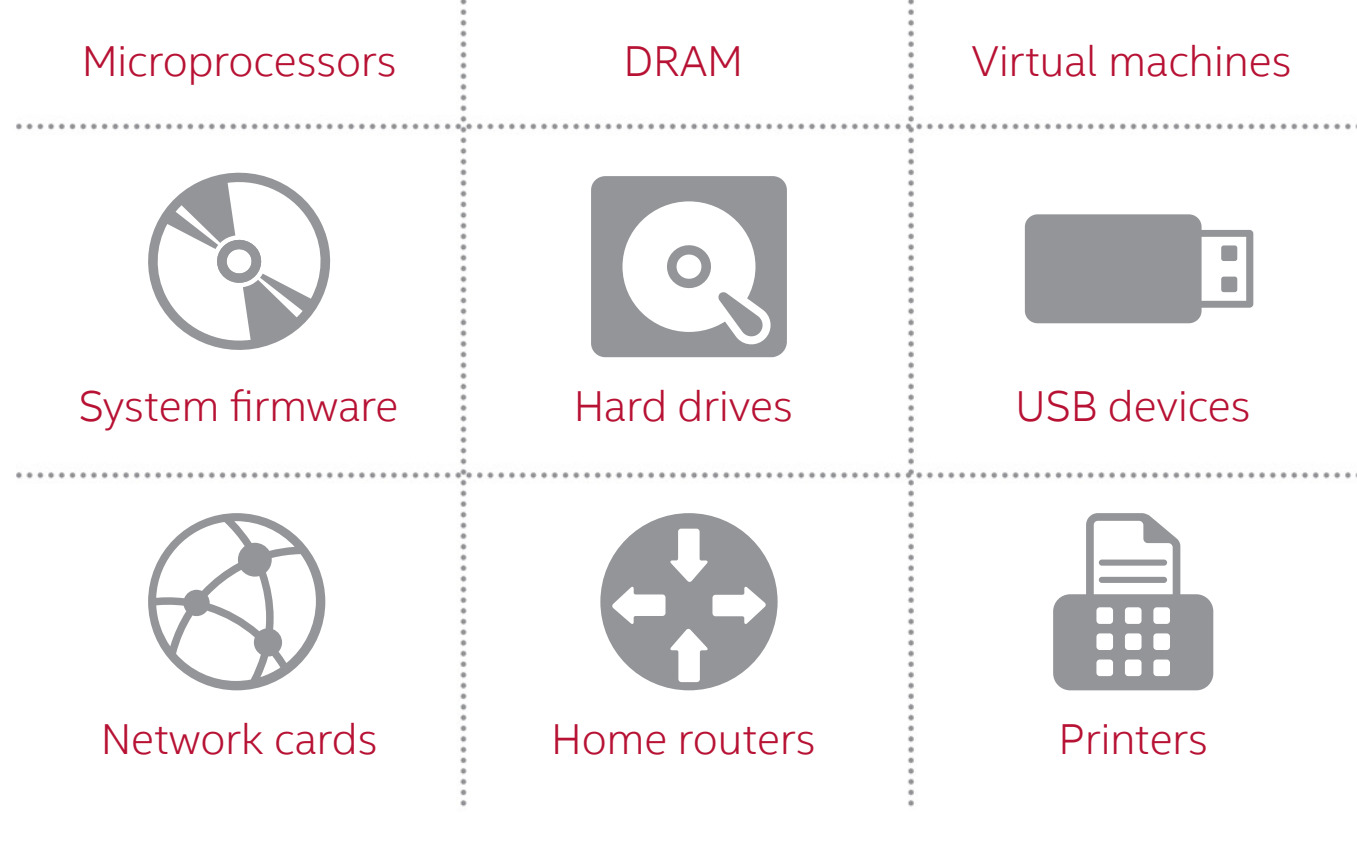
## Hardware Attacks

**In 2017, we will see hardware attacks, system firmware attacks, and attacks on virtual machines.**

Successful hardware and firmware attacks are more powerful than attacks on applications.

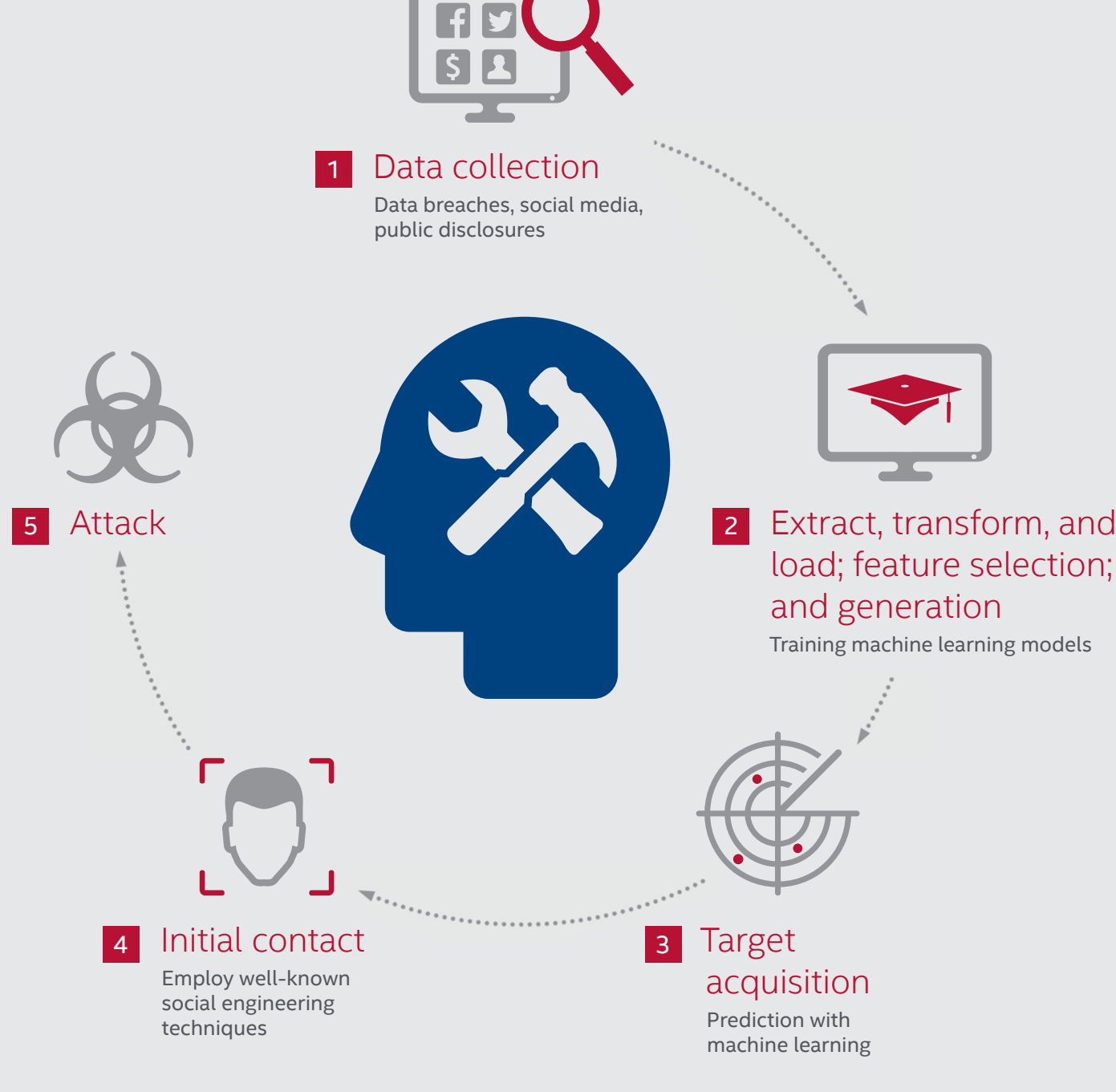


Known hardware and firmware vulnerabilities



## Social Engineering Attacks

**Machine learning will accelerate social engineering attacks.**

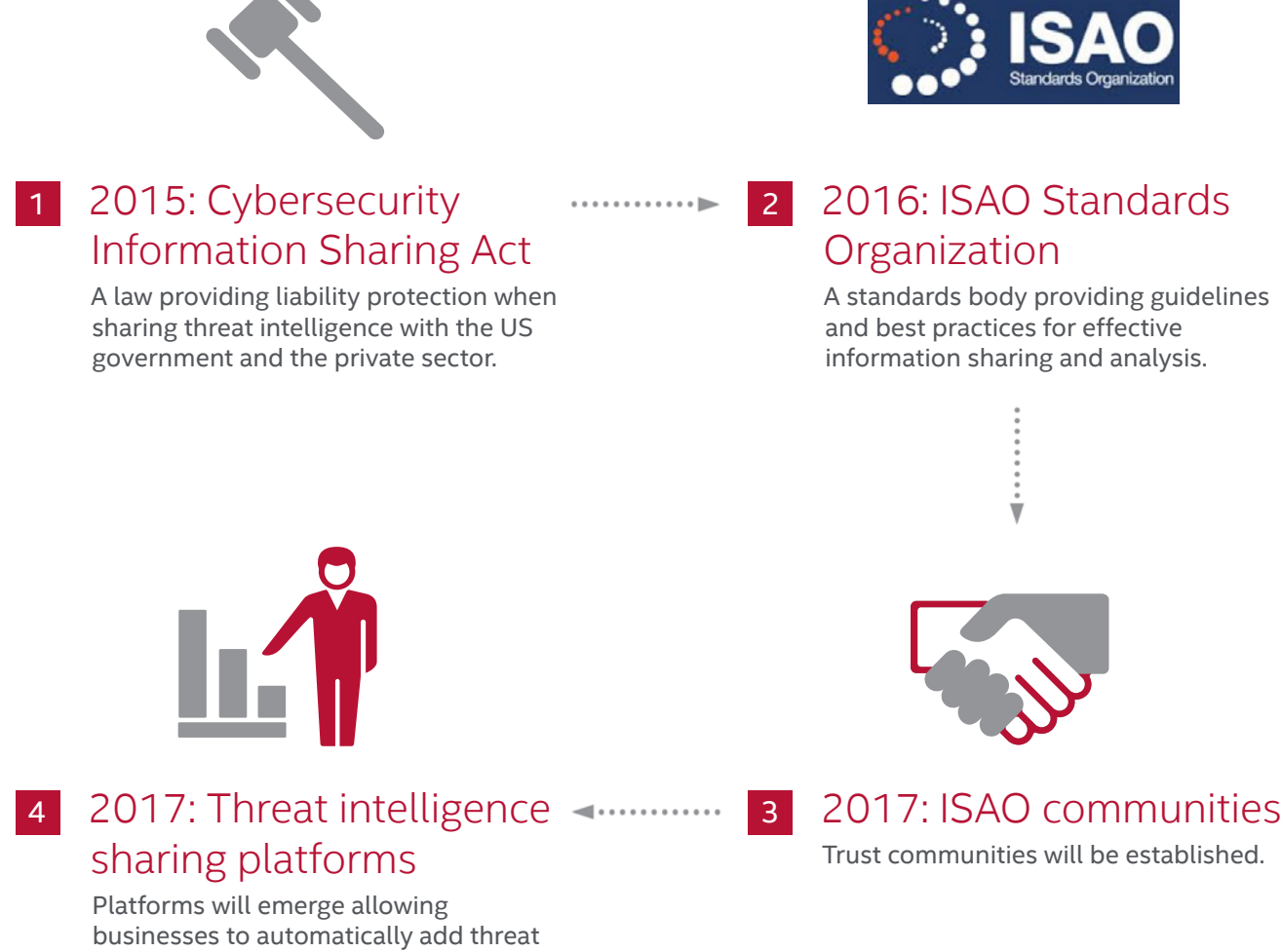


Data exposed in 2016 for machine learning training



## Threat Intelligence Sharing

**Threat intelligence sharing will see major advancements in 2017.**



McAfee Labs 2017 Threats Predictions

Visit [www.mcafee.com/2017Predictions](http://www.mcafee.com/2017Predictions) for the full report.

